

Roller Door / Sliding Door Shower Room



Door type: Automatic rolling/sliding door

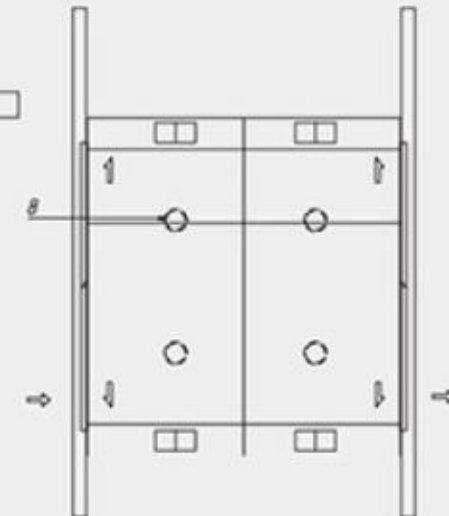
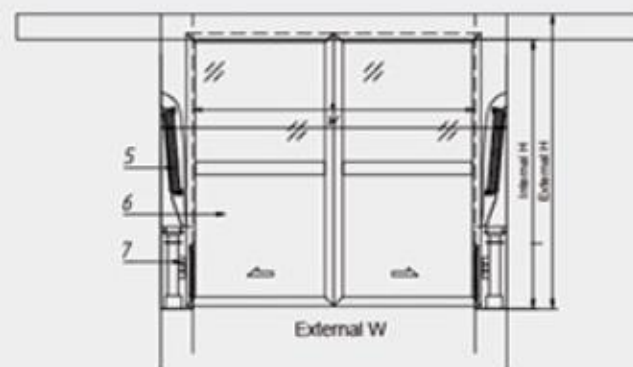
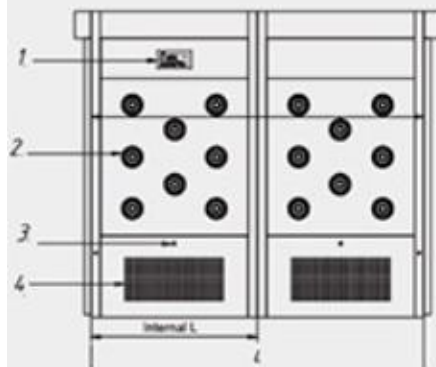
SS nozzle diameter: $\varnothing 25\text{mm}$

Material: powder coated steel/stainless steel

Controller: Electronic control panel/ PLC

Power supply: 220V/380V

Dimensions: Customized

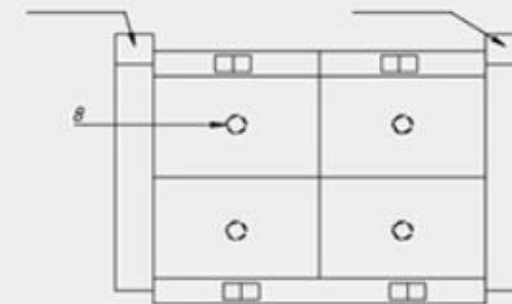
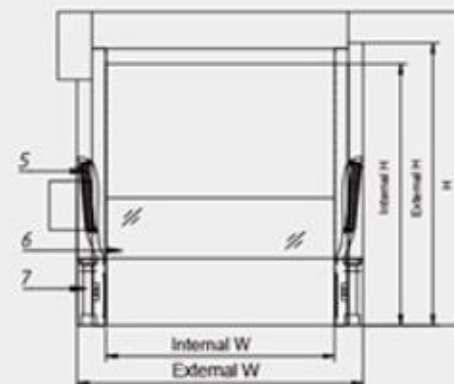
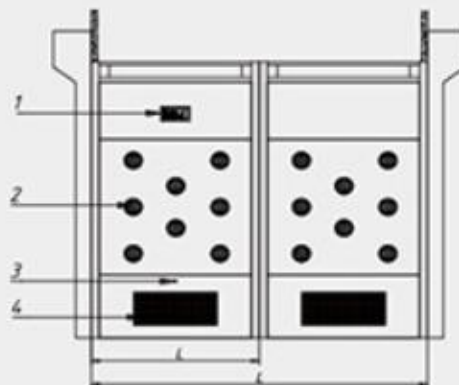


// Parameter

1. Control panel
2. Nozzle
3. Infrared sensor

4. pre-filter
5. HEPA filter
6. Double open sliding door

7. Fan
8. Embedded light



// Parameter

1. Control panel
2. Nozzle
3. Infrared sensor

4. pre-filter
5. HEPA filter
6. PVC Automatic roller door

7. Fan
8. Embedded light

PRODUCT DETAILS

01 HIGH PERFORMANCE FAN

Specialized purification fan for air shower

Large air volume, low noise

Long life-span



02 SLIDE RAIL STYLE DOOR CLOSER

Can be positioned at any angle

Hydraulic buffer, low closing sound

*The automatic air shower room uses automatic sliding door closers



03 OBSERVATION WINDOW

Double-layer tempered glass

Black lining design

5mm glass thickness



04 STAINLESS STEEL NOZZLE

Rotatable air shower nozzle
D25mm air outlet for big air flow

Thoroughly blow and shower without dead ends

05 STAINLESS STEEL HANDLE

Stainless steel 304

Anti-corrosion and rust-resistant, strong and durable

Curved design, easy to push and pull





06 LED LIGHTING

Embedded installation,
space saving
Energy saving
Can be equipped with UV
germicidal lamp

09 HIGH EFFICIENCY FILTER

Built-in high efficiency filter
without partition
High efficiency, low resistance
Filtration efficiency
99.99%@0.3 μ m



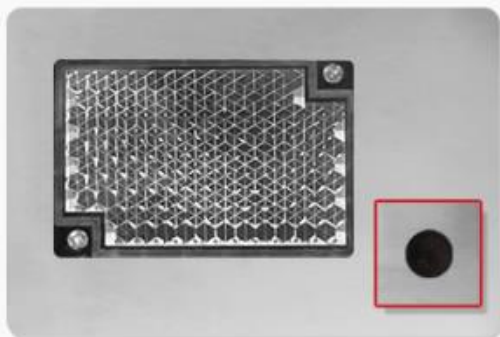
07 LCD CONTROL SCREEN

Intelligent voice prompt
Real-time monitor equipment
operation
Visual control, simple operation



10 CABINET MATERIAL

Optional:
Epoxy powder coated
steel/304 stainless steel
High-quality board, reliable
quality



08 PHOTOELECTRIC SENSOR

Infrared automatic induction
blowing
Responsive and fast
Less susceptible to interfer-
ence

Safe sensor Settings

Say goodbye to pinching accidents as our advanced technology ensures a seamless and hassle-free experience. Whether you prefer automatic or manual operation, our doors are equipped with fault detection and alarm functions, guaranteeing a smooth and worry-free process every time.

Quality material

1. Our product is crafted using premium materials for enhanced durability and longevity. The utilization of high-quality cold-rolled steel sheet, available in either epoxy powder coated or stainless steel finishes, ensures excellent corrosion resistance and rust resistance.
2. The incorporation of a transparent window and LED electronic lighting system ensures superior lighting conditions while minimizing energy consumption. Enjoy a well-lit environment with improved clarity and brightness, all while reducing your carbon footprint.

Application Areas

- Semiconductor factory
- Microelectronics factory
- Biological pharmaceutical factory.

Breakthrough

1. Experience the cutting-edge innovation of our intelligent control chip, ensuring optimal safety and hygiene. Our two-door electronic interlock system effectively prevents cross-infection while meeting stringent sealing requirements. With the built-in shutter door control core chip, doors can open or jog open automatically, while providing real-time monitoring of input signals. Enjoy the convenience of a key to restore factory defaults, along with prompt alarms and notifications for settings and faults, enabling easy and timely maintenance.
2. Our modular design ensures utmost convenience in assembly and transportation. With easily interchangeable components, our product can be swiftly assembled and disassembled, allowing for efficient transportation and hassle-free installation.
3. Experience superior sealing and exceptional filtration efficiency with our advanced design. Our utilization of EVA sealing material ensures a high-performance seal, effectively preventing leakage.